



Keith  
Ashton

The Galleries, Warley  
Brentwood





## 21 ROSE COURT THE GALLERIES

Warley Brentwood, CM14 5GJ

Keith Ashton Estates take great pleasure in marketing this beautiful two double bedroom top floor purpose built apartment, affording an outstanding view over immediate greensward onto a London skyline. Rose Court forms part of the award winning Galleries Development, itself situated conveniently for Brentwood's Mainline Station, making a perfect purchase for commuters or investors.

- Sought after location
- Top floor apartment
- Two double bedrooms
- Ensuite & Family bathroom
- Security entry system
- Concierge service
- Allocated parking
- Outstanding views

Offers In Excess Of £425,000





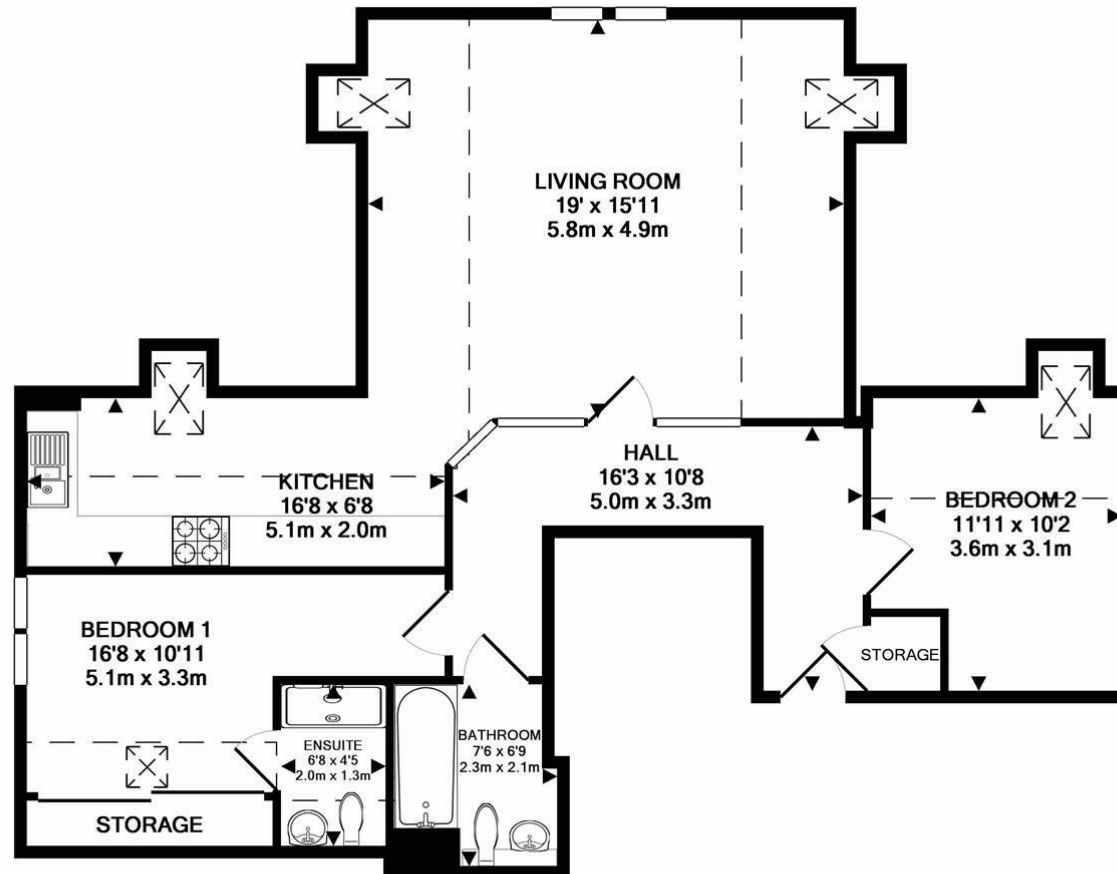
## Description

A simply stunning apartment has been created by its current vendor. From the moment you step in, the apartment doesn't fail to impress. A spacious hallway with partitioned glasswork draws you to a fantastic sitting room with a vaulted roofline and a great sense of space.

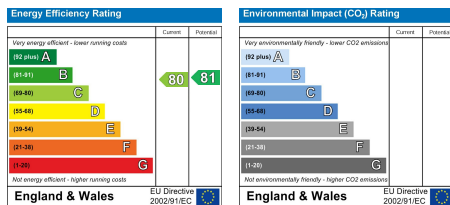
Open plan, yet feeling separate, is the apartment's fitted kitchen, complete with a comprehensive range of gloss fronted wall and base units and a range of built-in appliances. In addition, there are two good-sized double bedrooms, one with an en-suite and finally, of course, the main bathroom with a modern white suite.

Stairs and lifts provide access to all levels with a secure entry system and full concierge service. Rose Court is surrounded by impeccably kept gardens, of which you have full use to explore. The property benefits from its own allocated parking.





TOTAL APPROX. FLOOR AREA 884 SQ.FT. (82.1 SQ.M.)  
THIS PLAN IS FOR ROOM IDENTIFICATION ONLY, AND ITS ACCURACY IS NOT GUARANTEED. [www.epcsinessex.co.uk](http://www.epcsinessex.co.uk)  
Made with Metropix ©2017



#### SERVICES:

Local Authority: Brentwood  
Council tax band:  
Post code: CM14 5GJ

#### VIEWING:

Strictly by prior arrangement with Keith Ashton Estate Agents

#### OPENING HOURS:

Monday to Friday: 8.45AM - 6.30PM | Saturdays: 9AM - 5.30PM | Sundays: 10AM - 2PM

**MORTGAGE INFORMATION:** We offer the additional facility of an in-house Independent Financial Adviser who will access all mortgage lenders with the purpose of providing you with the benefit of choice. For quotations or comparables please call 01277 260858 or visit our interactive website at [www.mortgagebusiness.net](http://www.mortgagebusiness.net)



We the Agent have not tested any apparatus, fittings or services for this property. The plot size is intended merely as a guide and has not been officially measured or verified by the Agent. Photographs are for illustration only and may depict items which are not for sale or included in the sale of the property. As part of the service we offer we may recommend ancillary services to you which we believe may help you with your property transaction. We wish to make you aware, that should you decide to use these services we will receive a referral fee. For full and detailed information please visit 'terms and conditions' on our website [www.keithashton.co.uk](http://www.keithashton.co.uk)

**Brentwood**  
Tel. 01277 260858

**Village Office**  
Tel. 01277 375757

**Lettings Office**  
Tel. 01277 202200

Explore more @ [www.keithashton.co.uk](http://www.keithashton.co.uk)